

# ICE-008 IP PBX

## 1. Product Information

### 1.1. New Mini PBX



ICE008 is new generation office communication equipment that delivers traditional PBX (private branch exchange) functions and more with advanced Internet protocol technologies. It is compact in size, diverse in features, easy to install and administer, and rides on existing broadband data network to provide robust, dynamic, and user friendly voice communication services to small/medium and home offices over local and wide area networks.

## 1.2. Features

### 1.2.1. System Features

- **Auto Provisioning**  
Automatically configures an IP phone to a pre-defined extension when it boots up, saves the trouble of and hazard of manual configuration by users.
- **Web Browser Based Administration**  
Gives you an easy graphical user interface to maintain the system via local and wide area network. With the ubiquity of Internet, you can have full control of the system from wherever the network is available.
- **SIP Trunking**  
Because ICE-800 uses industry standard SIP protocol, it can hook up with Voice-over-IP (VoIP) trunks provided by any SIP compliant Internet telephony service provider.
- **PSTN Trunking**  
ICE-800 can also work with any SIP compliant ATA (analog terminal adapter) or VoIP gateways that connect to regular PSTN (public switched telephone network) lines.
- **Dialing Plan**  
Assigns different prefix and suffix to outbound calling routes. This allows efficient and cost based usage of different trunks as the users desire.
- **Call Report**  
ICE-800 keeps detail records of all incoming and outgoing calls that can be reviewed by

the user online.

- **System Backup/Restore**

System configuration and report data can be backed up and restored as needed.

- **Built-In Router**

ICE-800 has built-in NAT and DHCP server. By connecting the LAN port to a hub it can create and manage a sub network of its own.

### 1.2.2. Call Handling Features

- **Automated Attendant & Voic Mail**

User can record system greetings and design interactive voice response (IVR) menu to custom flavor their phone system. Each extension has its own password protected voicemail box with personal greetings and full message management capability.

- **Call Transfer/Call Waiting**

These are standard PBX call handling functions that deliver calls between trunk lines and individual extensions.

- **Call Parking/Call Pickup**

These are enhanced PBX functions that allow calls to be parked and then picked up by extensions in a designated group.

- **Call Forward & Do-Not-Disturb**

These are convenient call answering options that can be individually set for each extension.

- **Follow-Me/Find-Me**

Transfers calls to designated extension, ring group, or IVR as the user desires.

- **Direct Inward Dialling (DID)**

Based on the incoming call's number, the call can be routed directly to an extension.

- **Music-on-Hold**

A preloaded musical file will be played while the call is being transferred or put on hold.

### 1.2.3. Advanced Features

- **Unified Messaging**

You can be notified of pending voice messages via e-mail.

- **Calling Group**

A group of extensions can be called in sequence.

- **Call Limit**

Allows you to set the maximum number of minutes the system can call out per day.

## 2. System Installation

### 2.1. Unpacking ICE-800

The package you received for ICE-800 should be a standard IM1200 package; however, the content may vary depending on the location and the dealer you have purchased the unit from. Report any damage or missing items in the package to your dealer right away.

Items in your package include:

- ICE-800 Unit
- Power Supply (5V DC)
- RJ-45 Network Cable

### 2.2. Network Requirement

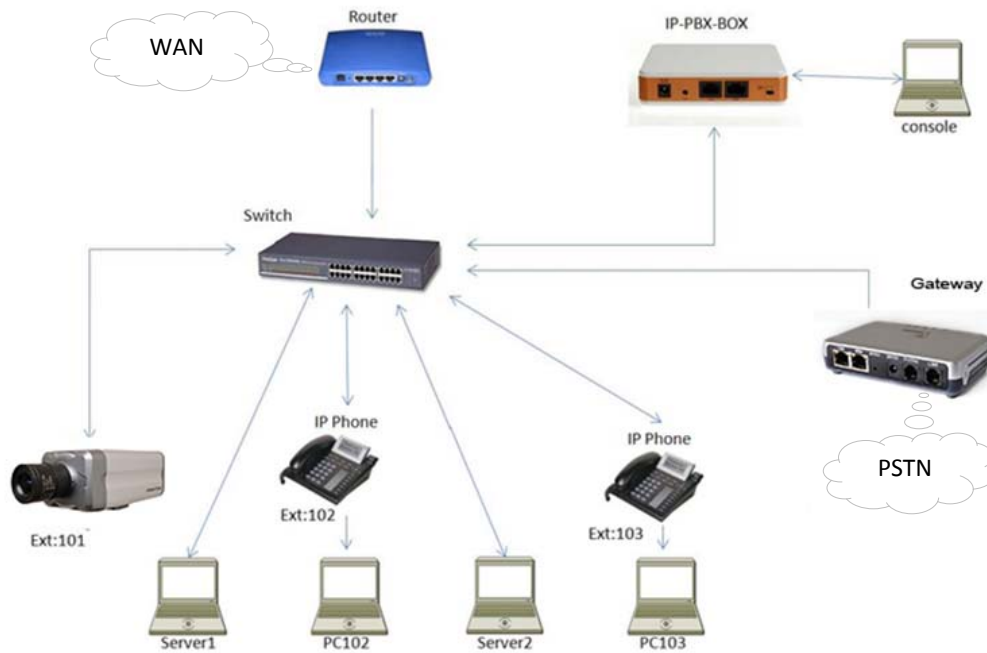
It is recommended that you provide a permanent Internet connection for ICE-800, such as that from a Leased Line, DSL, or Cable Modem, and assign a static IP address (real IP address if applicable) to ICE-800.

You can also set up ICE-800 in the DHCP network environment, though. If you assign a pseudo (private) IP address to ICE-800, either static or dynamic IP address, you need to open the following TCP and UDP ports for the IP address assigned to ICE-800:

- TCP/UDP ports 5060-5082 for SIP protocol.
- TCP/UDP ports 8000-20000 for RTP audio transport.

In order for the e-mail notification of voice mail messages to work, a standard SMTP e-mail server with a valid e-mail account is required.

## 2.3.LAN Solution



2-3-1. IP PBX Solution1

## 2.4. PBX View

### 2.4.1. Product View

Dimensions: 4.5"(W)\*4.5"(L)\*1.2"(H) or 11.5cm(W)\*11.5cm(L)\*3cm(H)



2-4-1. ICE-800 Front Face



2-4-2. ICE-800 Side Face

### 2.4.2. Control Panel

- Pwr Indicator A green light indicates the power is on.
- Sip Indicator Normally in solid green. Flashing green light indicates the SIP protocol is in progress.
- Wan Indicator Either Solid or flashing green, indicating the network traffic status between ICE-800 and the wide area network.
- Lan Indicator Either Solid or flashing green, indicating the network traffic status between ICE-800 and the local area network.
- Ez Indicator Reserved for future use.
- Ez Setup Button Reserved for future use.



2-4-3. Control Panel View

### 2.4.3. Back Panel View

- DC 5V Jack Power connection.
- INT Pinhole Reserved for future use.
- LAN Jack 10/100M RJ45 Ethernet connection to internal network.
- WAN Jack 10/100M RJ45 Ethernet connection to external network.
- STA/BRI Switch Reserved for future use.



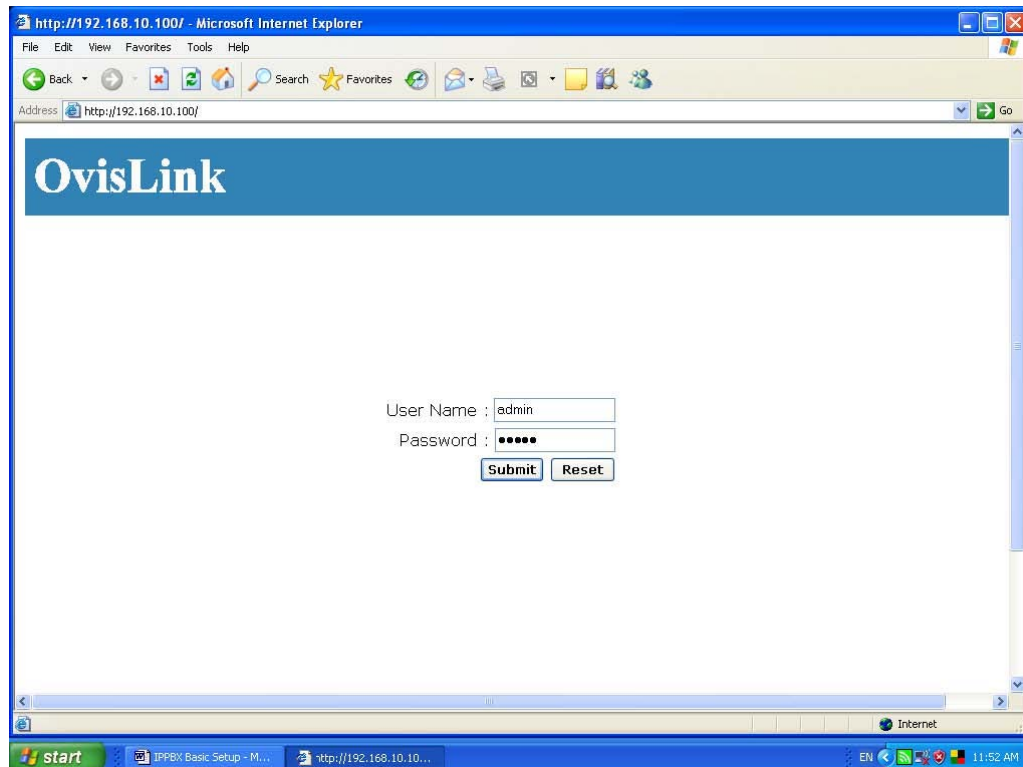
2-4-4. ICE-800 Back Face



2-4-5. ICE-800 Back Face

## 2.5. Configuration

- Connect a PC to IPPBX's LAN port, type 192.168.10.100, Username: admin, Password: admin
- Write down WAN IP
- Go to IP-PBX, Extensions, set up a new extension
- Go to Inbound/Outbound, Trunks, set up a new trunk Inbound/Outbound, Inbound, add a inbound route
- Inbound/Outbound, Outbound, add a outbound route
- Change IP Phone setting



http://192.168.10.100/ - Microsoft Internet Explorer

File Edit View Favorites Tools Help

Address http://192.168.10.100/

# OvisLink

**System**

**Information**

Hardware Version	1.1.0
Software Version	1.02D8b
WAN Connect Type	DHCP
WAN MAC Address	00:02:68:06:FB:08
WAN IP Address	192.168.0.2
WAN Subnet Mask	255.255.255.0
WAN Gateway Address	192.168.0.1
WAN DNS	168.95.1.1,168.95.192.1
LAN IP Address	192.168.10.10C
DHCP Server	Enabled,192.168.10.150-192.168.10.200

Information  
WAN Config  
LAN Config  
Time Zone  
SMTP Setting  
Firewall Setting  
Change Password  
Logout  
Reboot  
Call Report  
Backup/Restore  
**IP-PBX**  
Extensions  
Ring Groups  
IVR  
System Recordings  
General Setting  
Feature Codes  
**Call Features**  
Always Forward  
Busy Forward  
No Answer Forward  
Do Not Disturb

Done Internet

http://192.168.10.100/ - Microsoft Internet Explorer

File Edit View Favorites Tools Help

Address http://192.168.10.100/

# OvisLink

**System**

**Add Extension**

Attribute	Value
Extension	101
Password	101
Voicemail Box	tech@ovislink.com
Video Codec	None
Type	Fixed
Adhoc Password	

Apply Cancel

Information  
WAN Config  
LAN Config  
Time Zone  
SMTP Setting  
Firewall Setting  
Change Password  
Logout  
Reboot  
Call Report  
Backup/Restore  
**IP-PBX**  
Extensions  
Ring Groups  
IVR  
System Recordings  
General Setting  
Feature Codes  
**Call Features**  
Always Forward  
Busy Forward  
No Answer Forward  
Do Not Disturb

Done Internet

start IPPBX Basic Setup - M... http://192.168.10.10... untitled - Paint EN 12:03 PM

http://192.168.10.100/ - Microsoft Internet Explorer

File Edit View Favorites Tools Help

Address http://192.168.10.100/

# OvisLink

**System**

- Information
- WAN Config
- LAN Config
- Time Zone
- SMTP Setting
- Firewall Setting
- Change Password
- Logout
- Reboot
- Call Report
- Backup/Restore
- IP-PBX**
- Extensions
- Ring Groups
- IVR
- System Recordings
- General Setting
- Feature Codes
- Call Features**
- Always Forward
- Busy Forward
- No Answer Forward
- Do Not Disturb

## Add Trunk

Attribute	Value
Name	123
IP Address	sjp02.ovislink.com
Need Registration	<input checked="" type="checkbox"/>
Account	8313030
Password	86691
Description	

http://192.168.10.100/ - Microsoft Internet Explorer

File Edit View Favorites Tools Help

Address http://192.168.10.100/

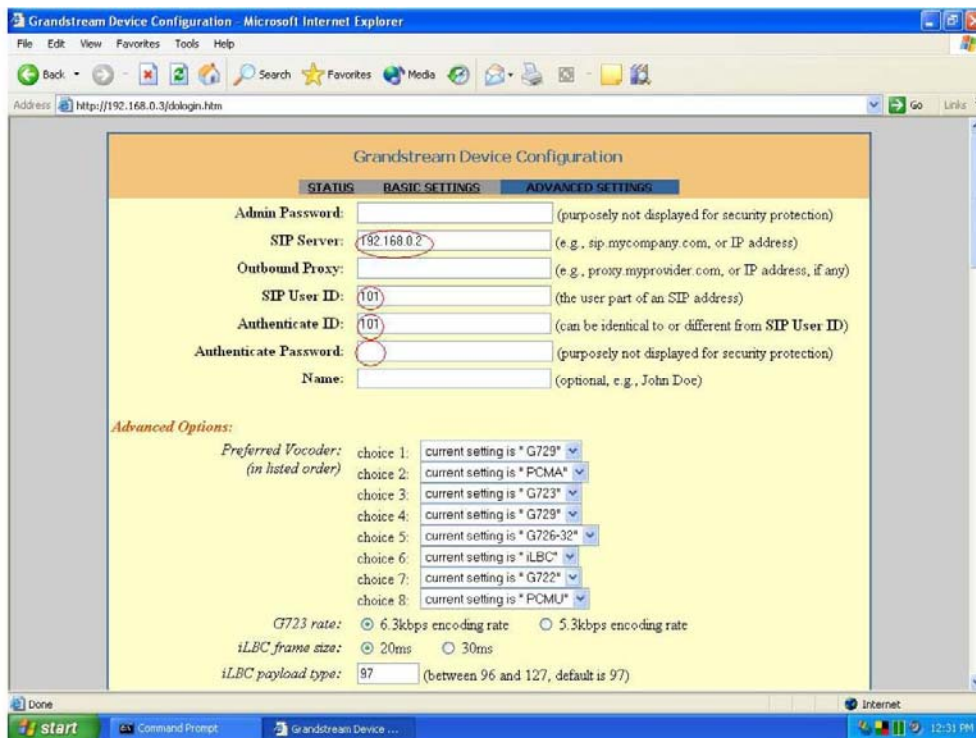
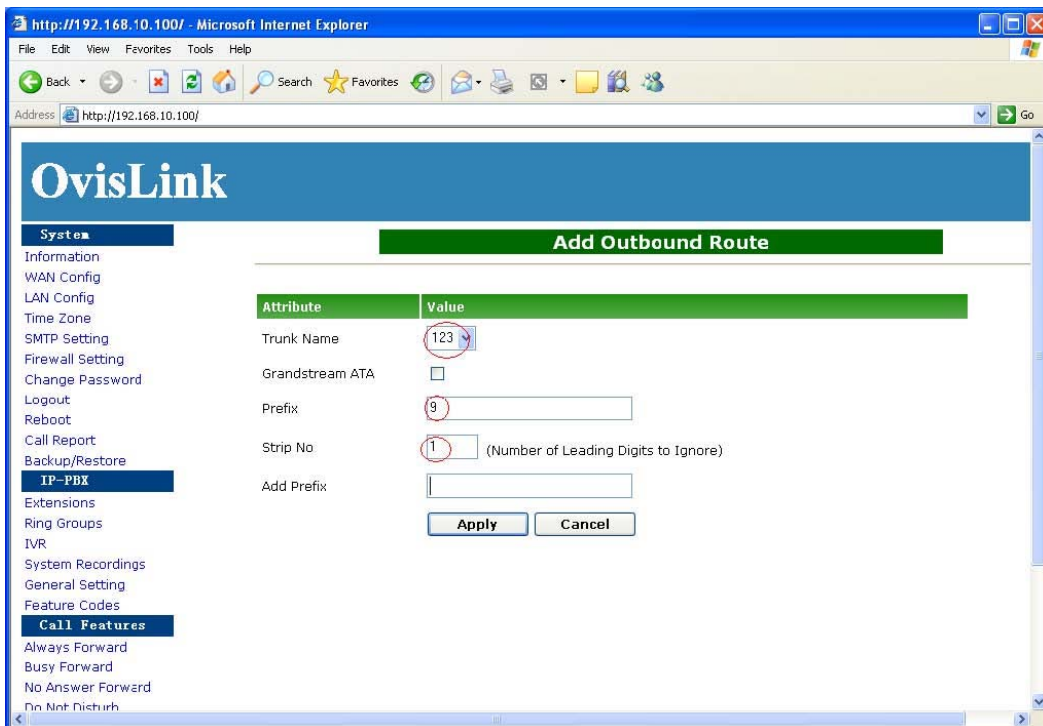
# OvisLink

**System**

- Information
- WAN Config
- LAN Config
- Time Zone
- SMTP Setting
- Firewall Setting
- Change Password
- Logout
- Reboot
- Call Report
- Backup/Restore
- IP-PBX**
- Extensions
- Ring Groups
- IVR
- System Recordings
- General Setting
- Feature Codes

## Add Inbound Route

Attribute	Value
Name	123
Inbound Number	8313030
Destination	<input checked="" type="radio"/> Extension 101
	<input type="radio"/> IVR MR-1
	<input type="radio"/> Ring Group
Description	



Make sure the IP-PBX, Extensions, is "online" now

The screenshot shows a web browser window displaying the 'Extensions' management page. The page has a sidebar menu on the left with categories like System, IP-PBX, Call Features, and Inbound/Outbound. The main content area shows a table of extensions. The 'Online/Offline' status for extension 101 is circled in red.

Extension	Password	Online/Offline	Voice Mail	Phone Brand	Mac Address	Type	Adhoc Password	Act
<input type="checkbox"/> 101	101	Online	tech@ovislink.com	None		Fixed		Ed

Buttons: Add, Delete