



# **OV902GP**

## **Product Specifications**



**All Rights Reserved.**



# OV902GP

## Product Specifications

### Introduction

The OV902GP is a GPON optical network user-end device. The device fits broadband access of fiber to the home (FTTH) very well. The features of the OV902GP are as follows: high reliability, perfect QoS guarantee, capable management, capacity expansion and networking flexibility. All functions and performance comply with standards of ITU-T and IEEE, international standards and industry standards.



- Powerful service access capability: device adopts single mode fiber wavelength division multiplexing (WDM), downlink signal wavelength is 1490nm, uplink signal wavelength is 1310nm, maximum IP data transmission distance is 20km.
- 1 x SC/APC optical interface, 2 x 10/100/1000BASE-T Ethernet interfaces.
- External power adapter input: 100V~240V AC, 50 Hz~60 Hz.
- Support G.652 single mode fiber access, adopts optical module without fiber jumper.
- Support ITU-T G.984.2, ITU-T G.984.3 and ITU-T G.984.4.



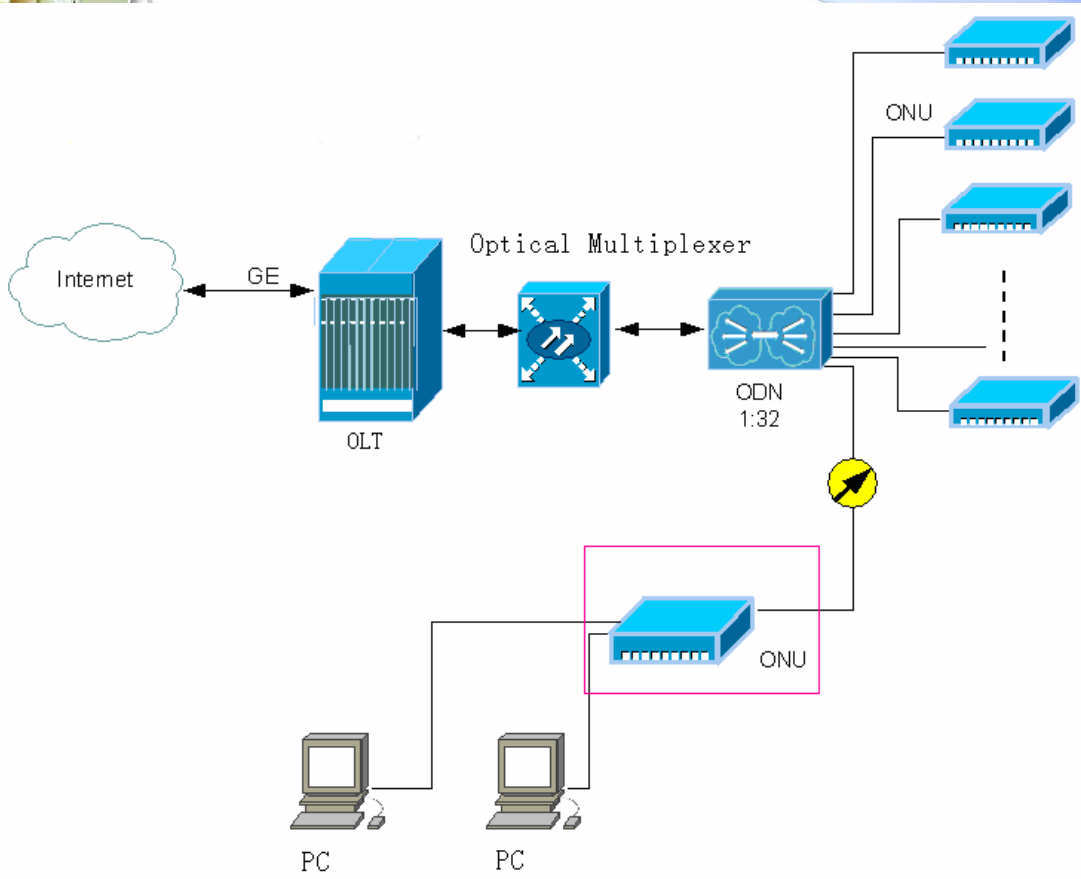
Support 128-bit AES encryption and uplink authentication.

Support built-in OAM, PLOAM, OMCI.

- Support 8 T-CONTs.
- Support 512 bidirectional GEMPORT.
- Support Forward Error Correction (FEC) and Dynamic Bandwidth Allocation (DBA).
- Uplink transmission rate: 1.25 Gbps, downlink transmission rate: 2.5 Gbps.
- The Ethernet interfaces support 10/100/1000BASE-T self-adaptation.
- VLAN service: 4k 802.1Q VLANs. Support VLAN interface, VLAN pass-through.
- VLAN filter: support CVLAN, SVLAN and QinQ.
- QoS: SP, WRR, QoS priority classification based on 802.1Q priority, QoS priority classification based on protocol, QoS priority classification based on DiffServ.
- QoS remark: support transparent bridging (802.1q bridging).
- IGMP: Support Snooping mode and controllable multicast mode (Filter). Support IGMP V1, IGMP V2 and IGMP V3, last member query (Snooping mode), fast leave, and multicast service management.
- Support static MAC address allocation. MAC address aging precision is 1 second.
- Support double backup for remote software update.
- Support Watch Dog service.
- Support alarm and performance statistic.
- Support broadcast suppression.

## Application

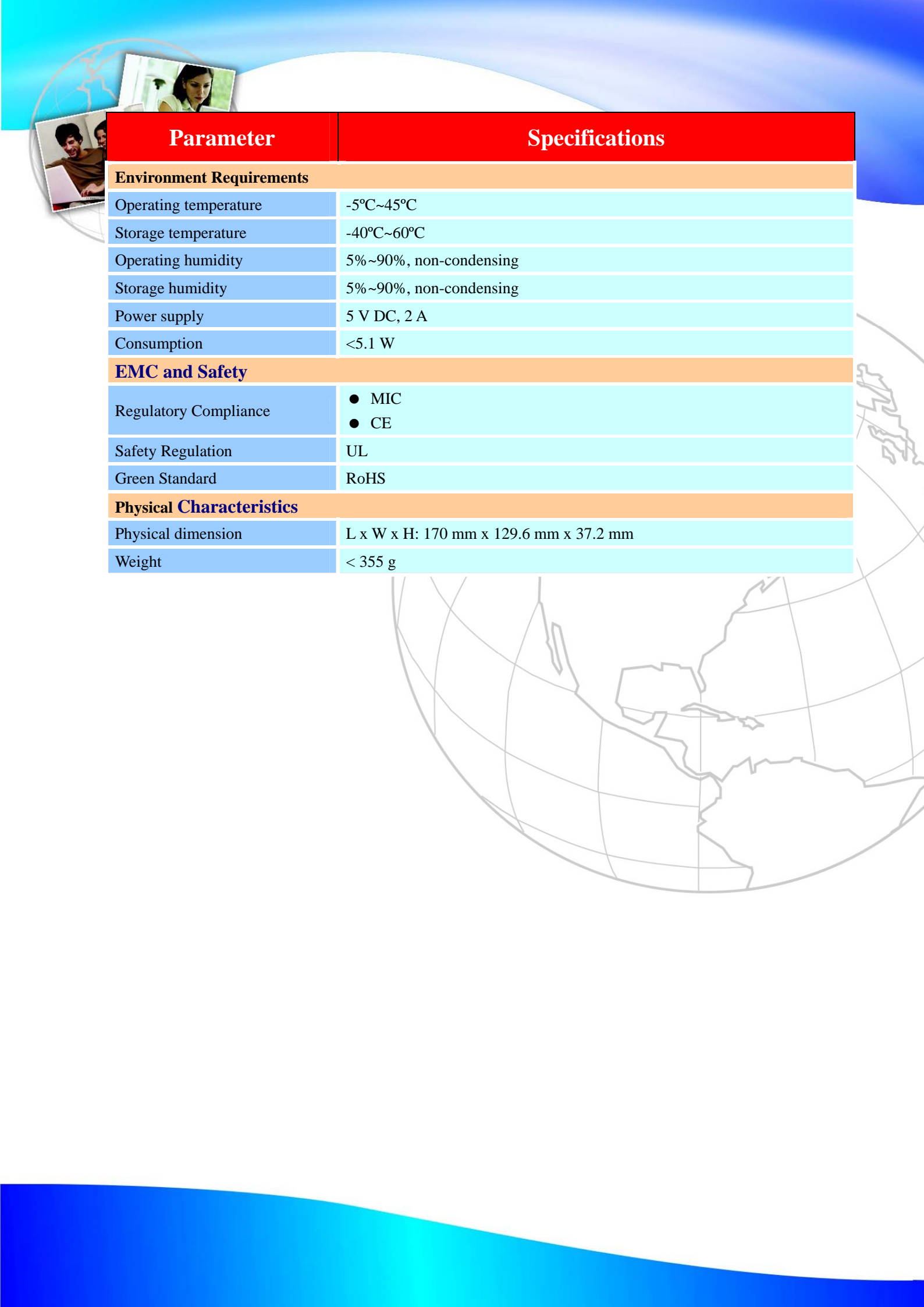
- Higher data rate broadband sharing
- Fiber to the home (FTTH)





## Parameters and Specifications

Parameter	Specifications
<b>System Specifications</b>	
Chipset	PMC 7401
<b>Optical Interface Technical Specifications</b>	
Maximum number of ONU subscribers	Up to 32 subscribers in 20 km
IP data transmission distance	Maximum: 20 km
Transmission rate	<ul style="list-style-type: none"> <li>● Downlink: 2.5 Gbps</li> <li>● Uplink: 1.25 Gbps</li> </ul>
Optical module connector	SC connector
Optical physical condition	<ul style="list-style-type: none"> <li>● IEEE 803.2ah-2004</li> <li>● ITU-T G.984.2 Class B+</li> </ul>
Optical specifications	<ul style="list-style-type: none"> <li>● Downlink <ul style="list-style-type: none"> <li>– Wavelength: 1490nm</li> <li>– Min receive sensitivity: -30dBm</li> <li>– Max receive saturation power: -3dBm</li> </ul> </li> <li>● Uplink <ul style="list-style-type: none"> <li>– Wavelength: 1310nm</li> <li>– Min output optical power: 0.5 dBm</li> <li>– Max output spectrum width (RMS): 0.5nm</li> </ul> </li> </ul>
Fiber	G.652 single mode fiber
Fiber connector	0.5m long single mode fiber and standard SC (non-angled) connector
<b>Ethernet Interface Technical Specifications</b>	
Standards	<ul style="list-style-type: none"> <li>● IEEE802.3</li> <li>● IEEE802.3au</li> <li>● IEEE802.3x</li> </ul>
LAN	<ul style="list-style-type: none"> <li>● 10/100/1000BASE-T</li> <li>● Auto-negotiation</li> </ul>
Number of port	2 GE
Connector type	RJ-45
Impedance	100 Ohm
Auto negotiation	<ul style="list-style-type: none"> <li>● IEEE 802.3</li> <li>● 10/100/1000BASE-T</li> <li>● Auto-negotiation</li> <li>● Full duplex/half duplex.</li> <li>● Support RJ-45 MDI/MDIX</li> </ul>
Link distance	Maximum: 100m



Parameter	Specifications
<b>Environment Requirements</b>	
Operating temperature	-5°C~45°C
Storage temperature	-40°C~60°C
Operating humidity	5%~90%, non-condensing
Storage humidity	5%~90%, non-condensing
Power supply	5 V DC, 2 A
Consumption	<5.1 W
<b>EMC and Safety</b>	
Regulatory Compliance	<ul style="list-style-type: none"> <li>● MIC</li> <li>● CE</li> </ul>
Safety Regulation	UL
Green Standard	RoHS
<b>Physical Characteristics</b>	
Physical dimension	L x W x H: 170 mm x 129.6 mm x 37.2 mm
Weight	< 355 g